



4 Bannockburn Sluicings
Felton Road, Bannockburn
Image: Clare Toia-Bailey



TOHU WHENUA

Landmarks that tell our stories

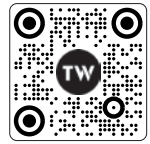
The Tohu Whenua story

Nau mai, haere mai ki te kaupapa o Tohu Whenua.

Tohu Whenua is your free itinerary to places to visit and explore history where it happened.



Follow in the footsteps of extraordinary and ordinary New Zealanders and discover the traditions, triumphs, challenges and innovations that have shaped our country and culture. Whether on foot, waka or wheels, Tohu Whenua has something for every explorer.

Visit our website, follow us on social media and let us guide you to Aotearoa New Zealand's must-dos.



Plan your next heritage adventure at [TohuWhenua.nz](https://www.tohuwhenua.nz) or scan the QR code for more information!

www.tohuwhenua.nz/otago

  tohuwhenua

Otago



1 TSS Earnslaw
Steamer Wharf, Tāhuna Queenstown
Image: RealNZ



5 Historic Ōamaru
Harbour Street, Ōamaru
Image: Reframed Media



6 Otago Central Rail Trail
Clyde to Middlemarch, Central Otago
Image: James Jubb

The Otago story

Ancestral landscapes, homes of invention and innovation and cycle trails bursting with history are just some of the must-dos you'll find in our Otago itinerary.

Cruise on the water, tour opulent houses and step back in time as you visit Tohu Whenua in this region.



Tohu Whenua

- | | | |
|------------------------------|--------------------|-----------------------------|
| 1. TSS Earnslaw | 6. Historic Hayes | 11. Dunedin Railway Station |
| 2. Arrowtown | 7. Historic Ōamaru | 12. Taieri Gorge Railway |
| 3. Kawarau Suspension Bridge | 8. Totara Estate | 13. Larnach Castle |
| 4. Bannockburn Sluicings | 9. Huriawa | |
| 5. Otago Central Rail Trail | 10. Olveston | |

Information key

Great for families	Entry fee	Bicycle friendly
Walking involved	Wheelchair access	Parking
Food and beverage available	Restrooms	

---* Taieri Gorge Railway
 ---* Otago Central Rail Trail

1 TSS Earnslaw

Steamer Wharf, Tāhuna Queenstown

Lady of the lake

The TSS Earnslaw, one of the world's oldest and largest remaining steamships, has graced Lake Whakatipu since 1912. Before roads existed it ferried people, sheep and goods to lakeside destinations. Take a cruise from Tāhuna Queenstown, see the giant steam engines at work and soak in the iconic alpine scenery.




Image: RealNZ

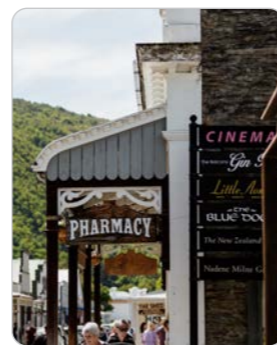
2 Arrowtown

Off State Highway 6, Kā-Muriwai Arrowtown

One golden village, two tales

This thriving picture-postcard tourist town reveals both sides of the gold-rush: the preserved avenue where wealthy banks and merchants traded in the mid-1800s, and the restored huts on the edge of town that show Chinese miners' more modest lives. Today, Arrowtown boasts excellent food, shopping, a museum and cinema, with numerous walking and cycle trails that meander through heritage areas.

Image: Destination Queenstown



3 Kawarau Suspension Bridge

State Highway 6, Gibbston Valley

A leap of faith

In 1882 Harry Higinson won an international engineering award for his innovative design of the Kawarau Suspension Bridge, which allowed safe crossing of the notoriously windy canyon. In 1988 it became the birthplace of bungy jumping, with people leaping from the height of a 10-storey building. Jump off, or cycle or walk across the bridge, marvel at the extraordinary feat of design and view the incredible landscape from on high.

Image: Destination Queenstown



4 Bannockburn Sluicings

Felton Road, Bannockburn

Goldrush badlands

Visit the remains of the dams, tunnels, walls and water races that were built to flush out gold. The result is a spectacular human-made landscape of cliffs and pinnacles to explore on foot or bike, where you can still see the remains of the miners' rammed-earth houses.

Image: Clare Toia-Bailey



5 Otago Central Rail Trail

Clyde to Middlemarch, Central Otago

Pedalling Otago's rural heart

Aotearoa New Zealand's original Great Ride, this popular cycle journey offers a taste of genuine Southern hospitality. Gold exploration and pastoral farming were at the heart of Central Otago's economy and this trail follows the rail route that provided vital access to these isolated communities. Cycle or walk through rugged and spectacular scenery that is second to none.

Image: James Jubb



6 Historic Hayes

Hayes Road, Oturēhua

A home of Kiwi invention

The Hayes family defined the spirit of 'Kiwi ingenuity'. Marvel at their mud brick home and the workshop where Ernest invented agricultural labour-saving devices including the fence-fixing wire strainer, rabbit baiters and windmills. His indomitable wife Hannah was the company sales rep, cycling around the region in ankle length skirts to take orders. Visit on an operating day to see the original machinery in action. Open September to May.

Image: Clare Toia-Bailey



7 Historic Ōamaru

Harbour Street, Ōamaru

A Victorian time capsule

This atmospheric precinct of ornately carved stone buildings tells of Victorian hopes and dreams during the late 19th century boom years. Experience the era by strolling in and around well-preserved buildings that once housed merchant and engineering enterprises, grain stores and banks, now home to shops, artisans, galleries and Steampunk HQ.

Image: Reframed Media



8 Totara Estate

State Highway 1, 8km south of Ōamaru

Putting NZ sheep on the world's table

It was from this once grand estate that the first shipment of frozen mutton was sent to England, marking the start of an export industry that has underpinned the nation's economic prosperity. Wonderfully restored Ōamaru stone buildings provide a view of rural life in Victorian times, with family-friendly activities on offer. Open September to May.

Image: Josh Jenkins



9 Huriawa

Barvas Street, Karitāne

Living history in an ancestral landscape

A strategic vantage point for early Māori settlers and rich in natural resources, this peninsula and the surrounding landscapes are home to layer upon layer of treasured Kāi Tahu stories. Take a self-guided walk (2.4km loop track, no charge) or book a Māori Pā Experience or Māori Waka Experience with Karitāne Māori Tours (fees apply).

Image: DunedinNZ



10 Olveston

42 Royal Terrace, Ōtepoti Dunedin

A slice of grand Edwardian life

Olveston has been loved by visitors since it was gifted to the City of Dunedin in 1967. Immerse yourself in the life of the wealthy Theomin family who lived at the house from 1906-1966. Everyone will find something of interest among the vast array of fine art, furniture and artefacts collected from around the world. Enjoy a guided tour or attend one of the many music and theatre events held throughout the year.

Image: DunedinNZ



11 Dunedin Railway Station

Anzac Square, Ōtepoti Dunedin

A first-class destination

Ornate and flamboyant, Dunedin's railway station is considered one of the world's best. Built when 100 trains would come and go in a day, the 'giant gingerbread house' is now home to a restaurant, gallery and the New Zealand Sports Hall of Fame. On Saturday mornings the forecourt farmers market is a popular meeting place for locals and visitors.

Image: DunedinNZ



12 Taieri Gorge Railway

Departs from Dunedin Railway Station, Anzac Square, Ōtepoti Dunedin

Iconic train trip

Journey from Dunedin Railway Station into the Taieri Gorge, where engineering, history and wild Otago landscapes meet. This five-hour train journey is one of Aotearoa New Zealand's most memorable rail experiences.

Image: DunedinNZ



13 Larnach Castle

145 Camp Road, Ōtepoti Dunedin

New Zealand's castle

Located on the Otago Peninsula, Larnach Castle tells a colourful story of ambition and tragedy. The majestic mansion was built in the 1870s, sparing no expense. When the family fortunes crumbled, William Larnach's grand vision fell into disrepair. Purchased by the Barker family in 1967, Larnach Castle, now lavishly restored and surrounded by vibrant gardens, offers tours, accommodation and events.

Image: Larnach Castle

